

A Program of the Arts Council of Windham County

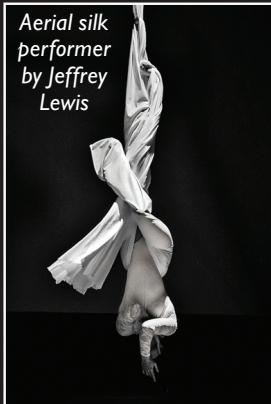
Gallery Walk

Brattleboro Vermont

A GUIDE TO AREA GALLERIES & MONTHLY EXHIBITS

PHOTOGRAPHY EXHIBIT TO BENEFIT THE NEW ENGLAND CENTER FOR CIRCUS ARTS - p. 5

Exhibit by
Soo Sunny Park



Aerial silk
performer
by Jeffrey
Lewis



NEW EXHIBITS AT BMAC RUN THROUGH JUNE - p. 7

“DRAWING FROM THE
VISIBLE WORLD”: ALDEN,
BOWEN, AND DANAHER AT
118 ELLIOT GALLERY - p. 12

ANOTHER WORLD: YOUNG
POETS AND ARTISTS FROM
THE POETRY STUDIO - p. 16

APRIL EXHIBIT LISTINGS - p. 18 WALK MAP - back cover

A Festive Downtown Stroll on First Fridays, 5:30 to 8:30
• 32 Venues, Many with an Artist Reception, on April 7 •

VOLUME 16, NUMBER 4 · APRIL 2017

ANOTHER WORLD: YOUNG POETS AND ARTISTS FROM THE POETRY STUDIO

The following statement accompanies the Poetry Studio exhibit at Amy's Bakery Arts Café.

Located on beautiful grounds in Marlboro, Vermont, The Poetry Studio, founded in 1995 by Ann Gengarely, invites imagination and discovery; a slowing down so that participants can listen to that part of themselves so



Aashna Kinkhabwala, writing in the gardens at The Poetry Studio, summer 2015

often forgotten in their busy lives. Students have the opportunity to offer “devoted attention,” whether it is to the folded bud of a hibiscus, the nature of friendship, or the special bond with grandparents.

Believing in the unique language of poetry to create bridges between inner landscapes and the world outside, Ann

has witnessed students of all ages work toward a profound understanding of their own nature. Having worked as a poet-in-the-schools for over 30 years, she has seen how the writing and sharing of poetry is healing and transformational, and profoundly believes that in a nurturing environment everyone can find a voice for what lies deep within. Terry Tempest Williams, in her memoir *When Women Were Birds*, writes about the healing nature of voice: *What needs to be counted on to have a voice? Courage. Anger. Love. Something to say; someone to speak to; someone to listen.* She concludes: *In a voiced community we all flourish.*



The gardens (looking southeast) at The Poetry Studio, summer 2014

The unfettered imagination of the poets is also represented in their drawings and presentations of the poems. Visual thinking as part of the

process of creation is integral to their work. The availability of drawing materials provides the opportunity for a multifaceted expression where word and image complement each other in the creation of a work of art.



*Maise Sperling, painting at The Poetry Studio
in spring 2016*

During summer workshops, Tony Gengarely, Professor Emeritus of Art History, facilitates this confluence of illustration, design, and poetic expression.

We are profoundly grateful to the students for displaying their work and to Amy's Bakery Arts Cafe for the opportunity to share with the larger community the amazingly rich creativity unfolding at The Poetry Studio.

For more information, contact Ann Gengarely at agengar@sover.net or Tony Gengarely at a.gengarely@mcla.edu. ■

BRATTLE
BORO
AREA
CHAMBER
OF COM
MERCE

*The Leading Voice for
600+ Employers Promoting
a Vibrant Business Community*

PenTangle Studio



*Calligraphy
Graphic Design
Manuscript Services*

Joy Wallens-Penford

*802.257.2616
momjoy@sover.net*

projects, Bob Dylan, Jimi Hendrix, the Clash, Prince, Gene Wilder, Marilyn Monroe, Clint Eastwood. Turn It Up! sells both new and classic music on vinyl and CD at bargain prices. Open Mon.-Thurs. 10-8, Fri.-Sat. 10-9, Sun. 11-6.



17. Amy's Bakery Arts Café

113 Main St. (802) 251-1071

"Another World," an exhibit of poetry and art by students at The Poetry Studio in Marlboro, is featured. Founder Ann Gengarely believes the unique language of poetry creates bridges between inner landscapes and the world outside. Program participants of all ages work toward a profound understanding of their own nature. Their unfettered imagination is also represented in drawings and presentations of the poems. During summer workshops, Tony Gengarely, professor emeritus of Art History, facilitates this confluence of illustration,



Writing in the garden at
The Poetry Studio

design, and poetic expression. Amy's offers European-style breads; soups, sandwiches, salads; specialty cakes, cookies, and other treats; open Mon.-Sat. 8-6, till 8 for the Walk,



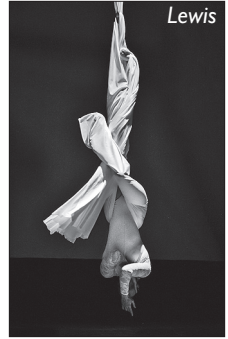
Painting in the art studio
and Sun. 9-5. (See article on page 16.)

18. Vermont Artisan Designs & Gallery 2

106 Main St. (802) 257-7044
www.vtart.com

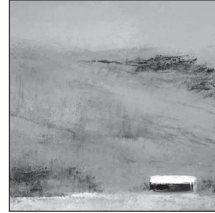
Featured in April is circus photography by **Jeffrey Lewis** in a benefit show and sale for the New England Center for Circus Arts. **All proceeds from sales of this work will go to the NECCA building fund.** Also on tap in the gallery for April are new paintings by **Irma Cerese** and **William**

E. Roberts Jr.; a portion of sales of these featured paintings will also benefit NECCA. Opening reception for the NECCA exhibit and sale from 5 to 7 pm



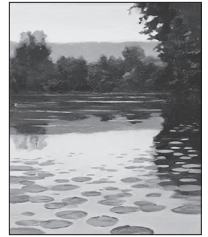
Lewis

Ad, p. 14; article, p. 5



Irma Cerese

during Gallery Walk; the fundraiser runs through May 6. Visit online or stop by 7 days to see work by over 300 artists and craftspeople.



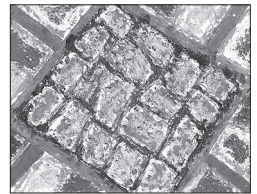
Wm. E. Roberts Jr.

19. Works Bakery Café

118 Main St. (802) 579-1851
worksbakerycafe.com

Work by painter/poet **Robert MacRae** is featured through April. A few self-published "story-poems" have been custom-framed with illustrations in gouache and ink on paper. His bohemian work emphasizes color and texture. Writing since his youth, he began painting two years ago. Some of his work has traveled to eight venues this past year

in the "Wonderland Forever" exhibit by four artists, currently showing through March at Maia Papaya in Bethlehem, N.H. The café serves Rainforest Alliance coffee and humanely raised meats, poultry, and dairy without antibiotics or added hormones—thoughtfully sourced, local when possible. Eat in or take out breakfast, lunch, or an early dinner. Open 6 to 8 daily.



• CAN'T GET TO THEM ALL?
STOP BY LATER IN THE MONTH
WITH A FRIEND •